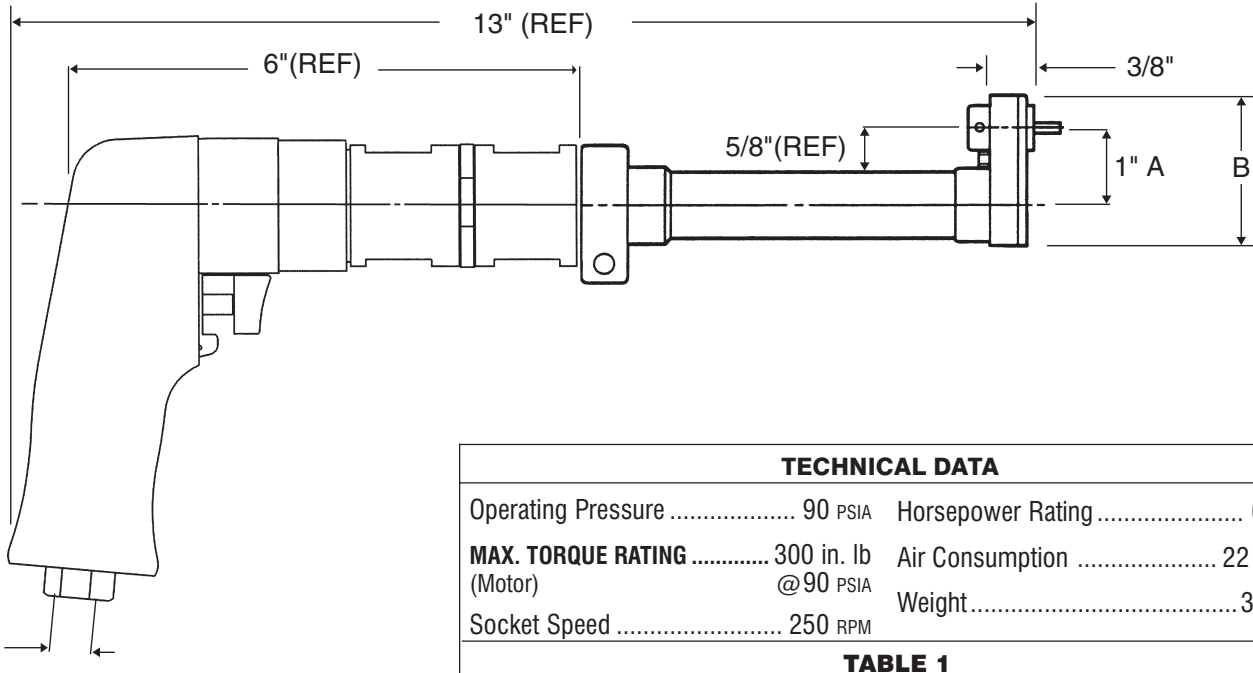


# INSTALLATION TOOLING SUPER HLA1072

**1 Inch Offset Driver Assembly  
with Thin Flush Socket  
and Super-Key™ (T-Series)**



DRIVER BASIC PART NO.      SOCKET HEX (REF TABLE)      SUPER-KEY HEX (REF TABLE)      SUPER-KEY (T-SERIES)

**HLA1072-312-078-T**

Example: complete driver assy. part no.

**ORDERING INFORMATION**

1. Match pin and collar hexes with Super-Key Hex and Socket Hex.
2. See table for corresponding complete driver assy part no.

TECHNICAL DATA			
Operating Pressure .....	90 PSIA	Horsepower Rating .....	0.70
<b>MAX. TORQUE RATING</b> .....	300 in. lb	Air Consumption .....	22 SCFM
(Motor)	@ 90 PSIA	Weight .....	3.8 lb
Socket Speed .....	250 RPM		

TABLE 1			
COLLAR DRIVING HEX (Matches Socket Hex)	PIN RECESS HEX (Matches Super-Key Hex)	COMPLETE DRIVER ASSY	OFFSET ADAPTOR & SOCKET ASSY
3/16	1/16	HLA1072-187-062T	HLG137-187-062T
7/32		HLA1072-218-062T	HLG137-218-062T
1/4		HLA1072-250-062T	HLG137-250-062T
9/32		HLA1072-281-062T	HLG137-281-062T
5/16		HLA1072-312-062T	HLG137-312-062T
11/32		HLA1072-343-062T	HLG137-343-062T
7/32	5/64	HLA1072-218-078T	HLG137-218-078T
1/4		HLA1072-250-078T	HLG137-250-078T
9/32		HLA1072-281-078T	HLG137-281-078T
5/16		HLA1072-312-078T	HLG137-312-078T
11/32		HLA1072-343-078T	HLG137-343-078T
3/8		HLA1072-375-078T	HLG137-375-078T
6/16	3/32	HLA1072-312-094T	HLG137-312-094T
11/32		HLA1072-343-094T	HLG137-343-094T
3/8		HLA1072-375-094T	HLG137-375-094T
7/16		HLA1072-437-094T	HLG137-437-094T
3/8		HLA1072-375-125T	HLG137-375-125T
7/16		HLA1072-437-125T	HLG137-437-125T
	1/8		

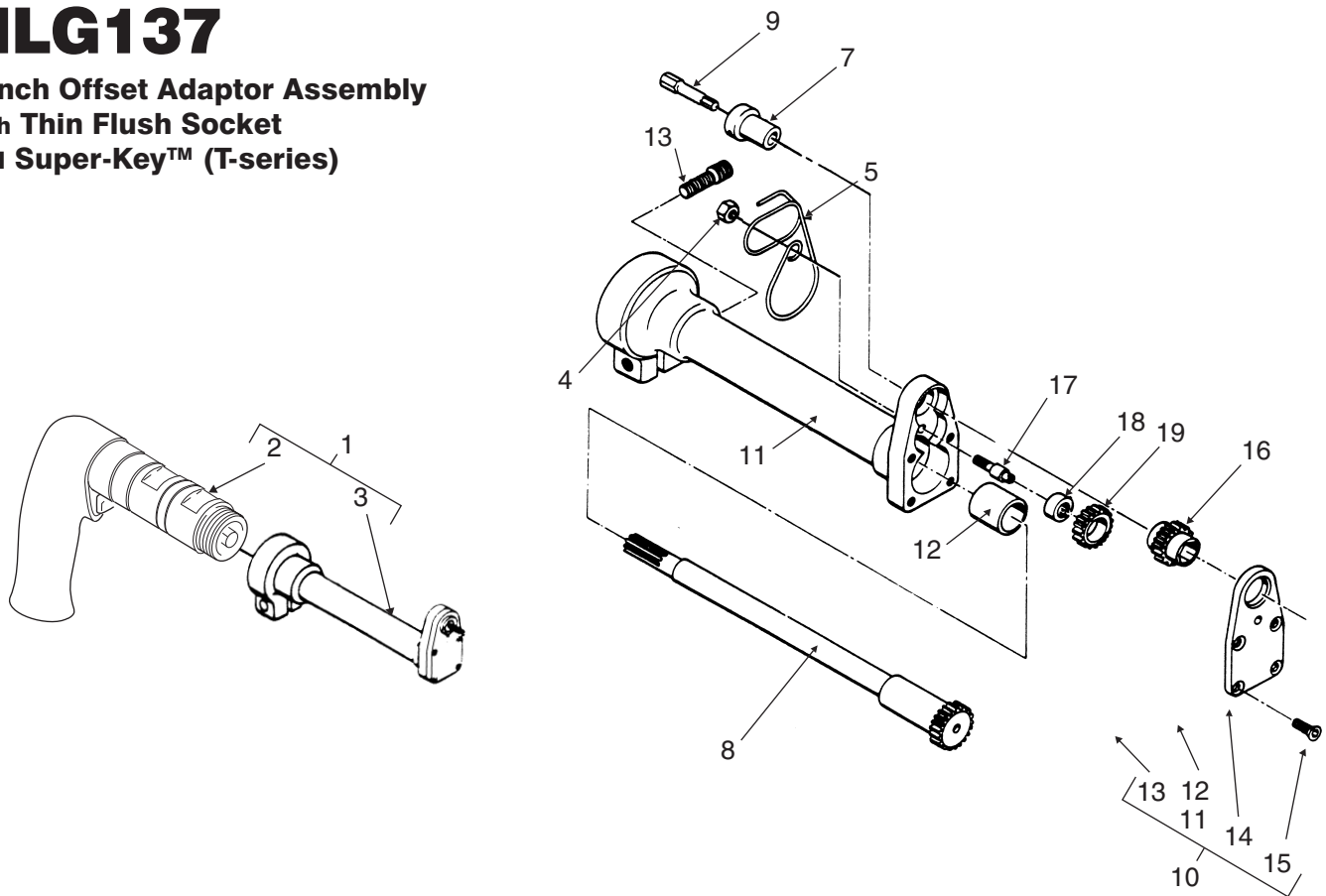
COLLAR Hex Size	A C to C	B OVERALL	C EDGE DISTANCE	D WIDTH
up to 3/8	1.375	2.338	0.437	0.375
7/16 and up	1.420	2.418	0.470	0.375

**SUPER HLA1072**  
1" OFFSET DRIVER ASSEMBLY with Thin Flush Socket & Super-Key™ (T-series)



# HLG137

## 1 Inch Offset Adaptor Assembly with Thin Flush Socket and Super-Key™ (T-series)



ITEM	PART NO.	DESCRIPTION	QTY	TABLE 2	
1	HLA1072-( )-( )T	Tool assy., complete	1	<b>SOCKET</b>	
2	HLB1174-003	. Air motor assy.	1		
3	HLG137-( )-( )T	. Offset adaptor and socket assy.	1	HEX SIZE (Matches Collar Driving Hex)	PART NO.
4	AN364-632C	. . Nut, hex	1	3/16	HLB1348-187
5	HLB1476-(3)	. . Spring, ejector	1	7/32	HLB1348-218
5a	HLB1437-(5) (-5 for .437 socket size)	. . Spring, ejector	1	1/4	HLB1348-250
6	HLB106-7	. . Gear, intermediate	1	9/32	HLB1348-281
7	HLB138-( )	. . Holder	1	5/16	HLB1348-312
8	HLB103-5	. . Gear, drive	1	11/32	HLB1348-343
9	HLT140K-( ) See Table 3	. . Super-Key	1	3/8	HLB1348-375
10	HLB209-3 (-5 for .437 socket size)	. . Housing assy., complete	1	7/16	HLB1348-437
11	HLB210-3 (-5 for .437 socket size)	. . . Housing sub-assy.	1	<b>TABLE 3</b>	
12	B810-5	. . . . Bushing (Boston Gear)	1	<b>SUPER-KEY</b>	
13	1/4-28 x 5/8 lg.	. . . Cap screw, socket head	1	HEX SIZE (Matches Pin Recess Hex)	PART NO.
14	HLB211 (or HLB212 for .437 size)	. . . Cover	1	1/16	HLT140K-062
15	82° x 6-32 x 5/16lg	. . . Screw, countersunk, flat head	4	5/64	HLT140K-078
16	HLB1348-( ) See Table 2	. . Socket	1	3/32	HLT140K-094
17	HLB208-3	. . Shaft, intermediate	1	1/8	HLT140K-125
18	B34	. . Bearing (Torrington)	1		
19	HLB106-11	. . Gear, Intermediate	1		

HS TOOLING

14083 S. Normandie Ave, Gardena CA 90249 USA  
800.482.4167 • fax 310.464.8545

HLG137

1 INCH OFFSET ADAPTOR ASSEMBLY with Thin Flush Socket & Super-Key™ (T-series)

3008 rev —