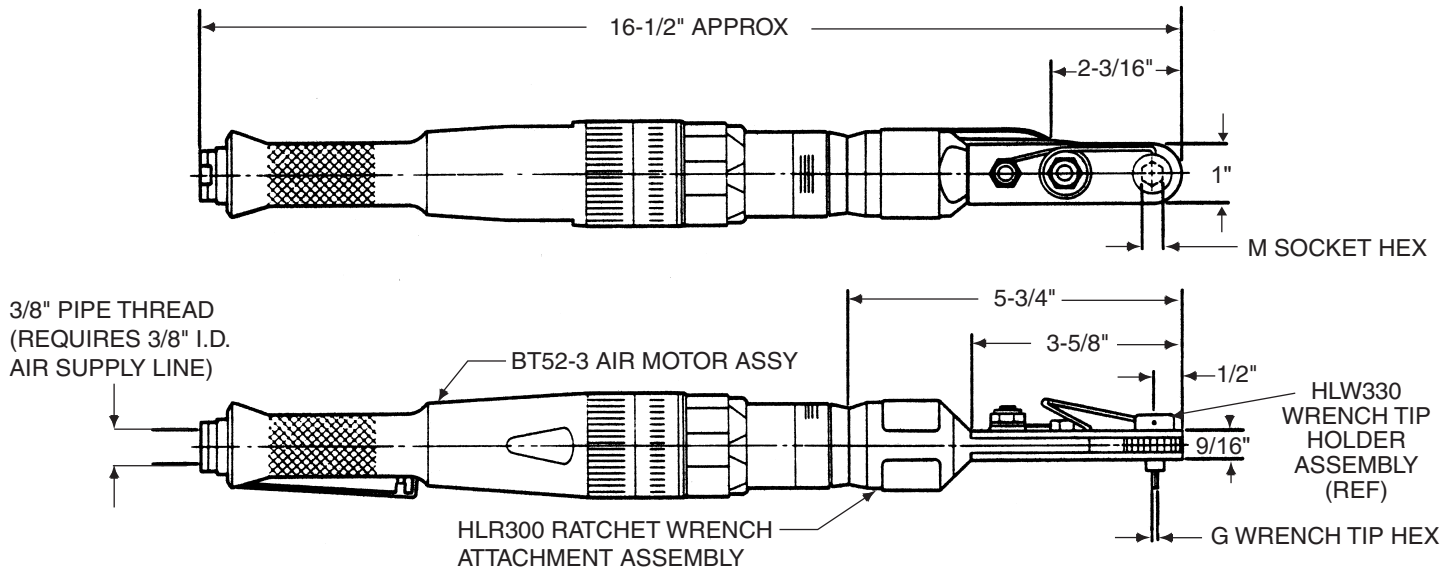


INSTALLATION TOOLING

HLA3000

Large Straight Ratchet Wrench Tool Assembly with Flush Socket and Super-Key™ (T-Series)



DRIVER BASIC PART NO.
HLA3000-437-156T
 Example: complete driver assy. part no.

SOCKET HEX REF. TABLE 1
 SUPER-KEY HEX REF. TABLE 1
 SUPER-KEY (T-SERIES)

ORDERING INFORMATION

1. Match pin and collar hexes with Super-Key Hex and Socket Hex.
2. See table 1 for corresponding complete driver assy part no.

TECHNICAL DATA			
Operating Pressure	90 PSIA	Horsepower Rating	0.70
MAX. TORQUE RATING	300 in. lb	Air Consumption	22 scfm
(Motor)	@ 90 PSIA	Weight	3.8 lb
Socket Speed	250 RPM		

TABLE 1			
"M" SOCKET HEX (Matches Collar Driving Hex)	"G" WRENCH TIP HEX (Matches Pin Recess Hex)	COMPLETE TOOL ASSY. PART NO.	RATCHET WRENCH ATTACHMENT ASSY. PART NO. (Ref.)
3/8		HLA3000-375-125T	HLR300-375-125T
7/16	1/8	HLA3000-437-125T	HLR300-437-125T
1/2		HLA3000-500-125T	HLR300-500-125T
9/16		HLA3000-562-125T	HLR300-562-125T
7/16		HLA3000-437-156T	HLR300-437-156T
1/2	5/32	HLA3000-500-156T	HLR300-500-156T
9/16		HLA3000-562-156T	HLR300-562-156T
5/8		HLA3000-625-156T	HLR300-625-156T

HLR300

Large Straight Ratchet Wrench Attachment Assembly with Flush Socket

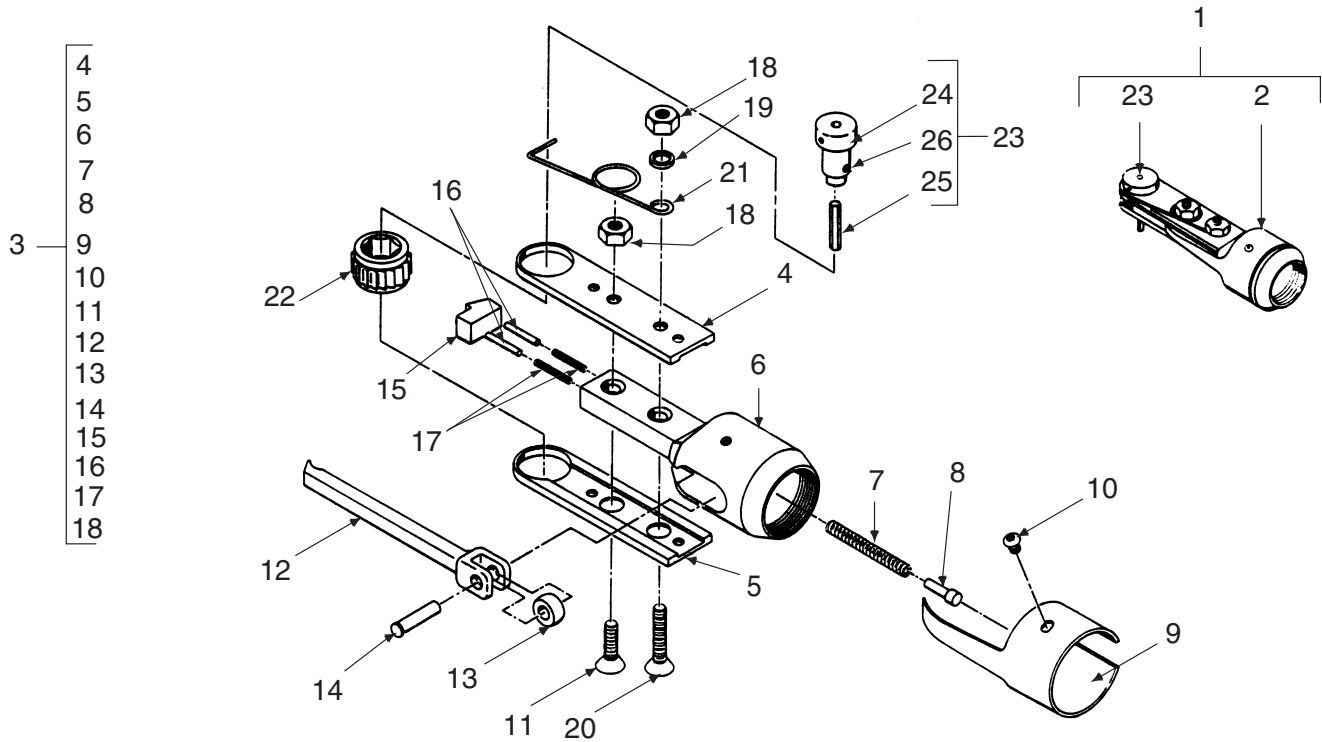


TABLE 2

SOCKET GEAR

HEX SIZE (Matches Collar Driving Hex)	PART NO.
3/8	28057
7/16	28060
1/2	28063
9/16	28066
5/8	28069

TABLE 3

WRENCH TIP

HEX SIZE (Matches Pin Recess Hex)	PART NO.
1/8	HLT140K-125
5/32	HLT140K-156

ITEM	PART NO.	DESCRIPTION	QTY	ITEM	PART NO.	DESCRIPTION	QTY
1	HLR300-()-()T	Ratchet wrench attachment assy.	1	14	9D-2725	... Pin	1
2	HLR259-()	. Ratchet attachment assy.	1	15	27278	... Pawl	1
3	AA-9D-6096-16	.. Ratchet attachment sub-assy.	1	16	80G-220	... Pin	1
4	9D-6229	... Sideplate, tapped	1	17	9D-6089	... Spring	1
5	9D-6230	... Sideplate, countersunk	1	18	C-101-D	... Nut	2
6	A-9D-6096	... Housing	1	19	AN960-416	.. Washer	1
7	9D-2582	... Spring	1	20	1/4-20 x 1" lg.	.. Screw, flat head socket cap 82°	1
8	9D-5159	... Pin	1	21	HLB1474-9	.. Spring	1
9	9D-5170	... Cover	1	22	Table 2	.. Gear, socket	1
10	B-117-J	... Screw	2	23	HLW330-()-()	. Holder assy., wrench tip	1
11	B-123-X	... Screw	1	24	HLB1034-()-()	.. Holder	1
12	A-27415	... Pushrod	1	25	HLT140-() Table 3	.. Wrench tip	1
13	9D-2545	... Roller	1	26	5-40 x 1/8 lg.	.. Set screw	1

HS TOOLING

14083 S. Normandie Ave, Gardena CA 90249 USA
800.482.4167 • fax 310.464.8545

HLR300

LARGE STRAIGHT RATCHET WRENCH ATTACHMENT ASSY w/Flush Socket