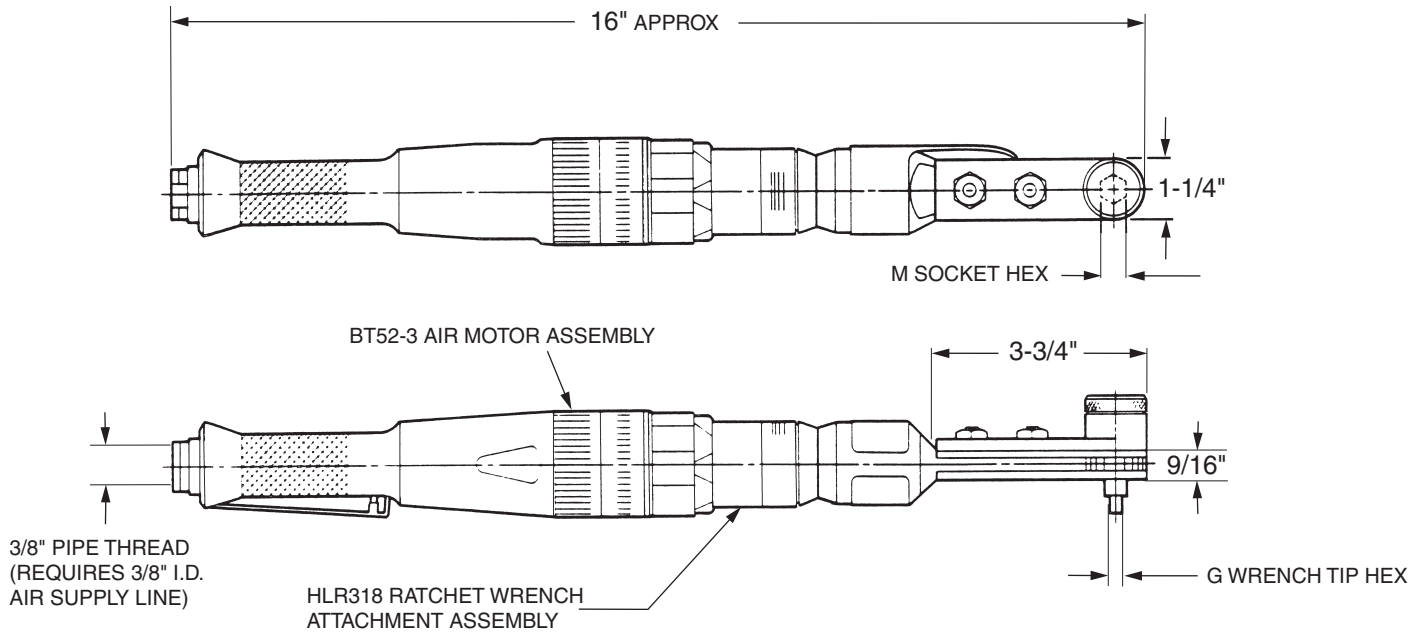


# INSTALLATION TOOLING

# HLA4001

## Large Straight Heavy Duty Ratchet Wrench Tool Assembly with Flush Socket



DRIVER BASIC PART NO.

"M" SOCKET HEX REF TABLE 1

"G" WRENCH TIP HEX TABLE 1

**HLA 4001 - 437 - 156**

Example 1: complete driver assy. part no.

### ORDERING INFORMATION

1. Determine collar driving hex and pin recess hex dimensions of the fasteners to be installed.
2. See table 1 for "M" socket hex & "G" wrench tip combo to match collar and pin dimensions. Determine complete tool assembly part no.

### TECHNICAL DATA

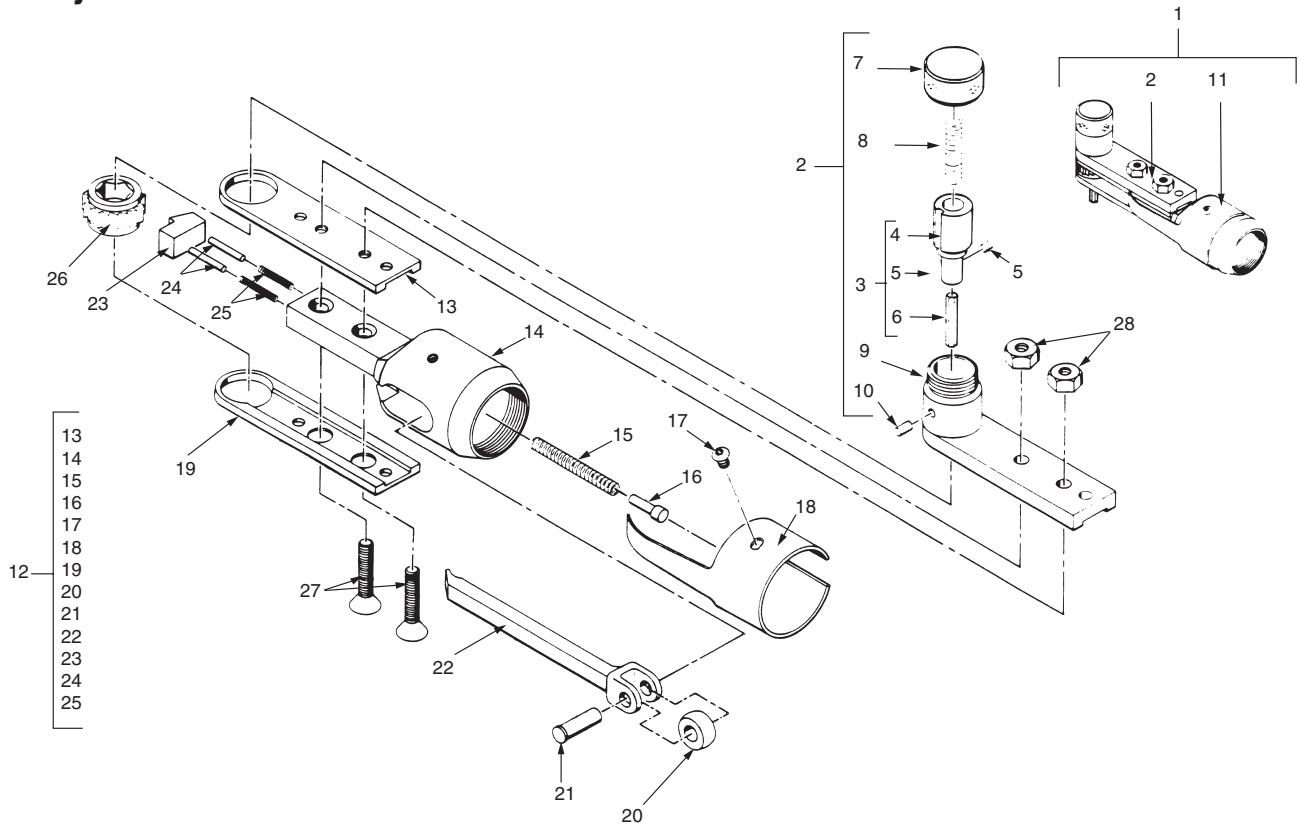
Operating Pressure .....	90 PSIA	Horsepower Rating .....	0.65
<b>MAX. TORQUE RATING</b> .....	400 in. lb	Air Consumption .....	30 CFM
(Motor)	@ 90 PSIA	Weight .....	4.2 lb
Socket Speed .....	170 RPM		

**TABLE 1**

"M" SOCKET HEX (Matches Socket Hex)	"G" WRENCH TIP HEX (Matches Super-Key Hex)	COMPLETE TOOL ASSY. PART NO.	RATCHET WRENCH ATTACHMENT ASSY. PART NO. (REF)	
7/16	1/8	HLA4001-437-125	HLR318-437-125	
1/2		HLA4001-500-125	HLR318-500-125	
9/16		HLA4001-562-125	HLR318-562-125	
5/8		HLA4001-625-125	HLR318-625-125	
11/16		HLA4001-687-125	HLR318-687-125	
7/16	5/32	HLA4001-437-156	HLR318-437-156	
1/2		HLA4001-500-156	HLR318-500-156	
9/16		HLA4001-562-156	HLR318-562-156	
5/8		HLA4001-625-156	HLR318-625-156	
11/16		HLA4001-687-156	HLR318-687-156	
9/16		3/16	HLA4001-562-187	HLR318-562-187
3/4			HLA4001-750-187	HLR318-750-187
11/16	7/32	HLA4001-687-218	HLR318-687-218	

# HLR318

## Large Straight Heavy Duty Ratchet Wrench Attachment Assembly with Flush Socket



**TABLE 2**

**SOCKET GEAR**

HEX SIZE (Matches Collar Driving Hex)	PART NO.
7/16	28105
1/2	28108
9/16	28111
5/8	28115
11/16	28118
3/4	28121

**TABLE 3**

**WRENCH TIP**

HEX SIZE (Matches Pin Recess Hex)	PART NO.
1/8	HLT540-125
5/32	HLT540-156
3/16	HLT540-187
7/32	HLT540-218

ITEM	PART NO.	DESCRIPTION	QTY	ITEM	PART NO.	DESCRIPTION	QTY
1	HLR318-( )-( )	Ratchet wrench attachment assy.	1	15	9D-2582	... Spring	1
2	HLB351-( )-( )	. Attachment sub-assy.	1	16	9D-5159	... Pin	1
3	HLB36-( )-( )	.. Holder assy., wrench tip	1	17	B-123-X	... Screw	2
4	HLB384-( )-( )	... Holder	1	18	9D-5170	... Cover	1
5	8-32 x 3/16 lg.	... Set screw	1	19	9D-6097	... Sideplate, countersunk	1
6	HLT540-( ) Table 3	... Wrench tip	1	20	9D-2545	... Roller	1
7	HLB2	.. Cap, retainer	1	21	9D-2725	... Pin	1
8	HLB5	.. Spring	1	22	A-27415	... Pushrod	1
9	HLB21	.. Housing	1	23	9D-6036	... Pawl	1
10	59-032-156-0375	.. Pin, roll (ESNA or equiv.)	1	24	80G-220	... Pin	2
11	HLR334-( )	. Attachment assy., ratchet	1	25	9D-6089	... Spring	2
12	AA-9D-6096-20	.. Attachment, ratchet	1	26	Table 2	.. Socket gear	1
13	9D-6098	... Sideplate, tapped	1	27	1/4-20 x 1.25 lg.	.. Screw, cap, 82°	2
14	A-9D-6096-20	... Housing	1	28	1/4-20	.. Nut, jam, hex	2

**HS TOOLING**

14083 S. Normandie Ave, Gardena CA 90249 USA  
800.482.4167 • fax 310.464.8545

**HLR318**

**LARGE STRAIGHT HEAVY DUTY RATCHET WRENCH ATTACHMENT ASSEMBLY with Flush Socket**